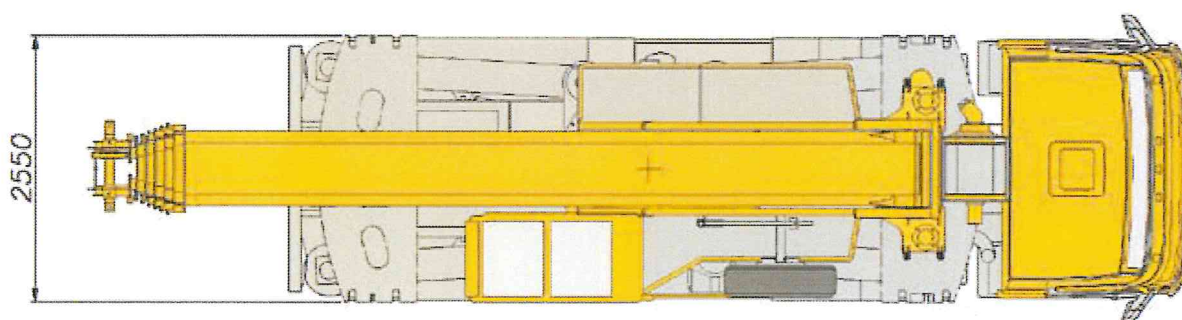
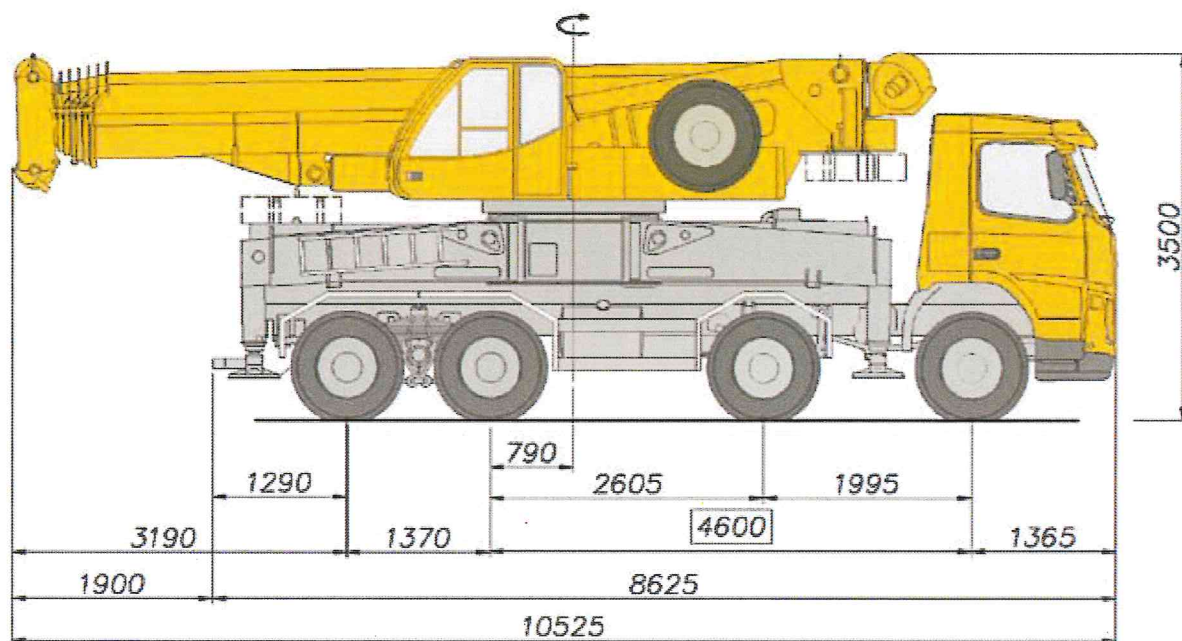


Dimensioni  
Dimensions  
Encombremets  
Maße

MTK 1006  
VOLVO FM 84R



LE INFORMAZIONI RIPORTATE SONO A TITOLO INDICATIVO. LA MESSA IN SERVIZIO DELLA MACCHINA RICHIEDE L'OSSERVANZA DEL MANUALE D'USO E DELLE TABELLE DI PORTATA FORNITE CON LA MACCHINA.

DATA PUBLISHED FOR INFORMATION ONLY. CRANE OPERATION IS SUBJECT TO THE OBSERVANCE OF THE USE MANUAL AND THE LOAD CHARTS SUPPLIED WITH THE CRANE.

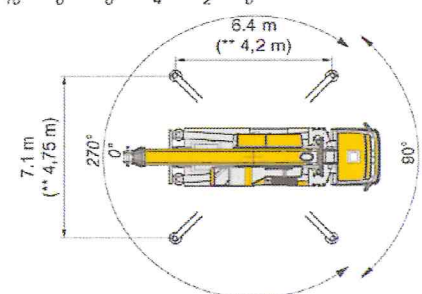
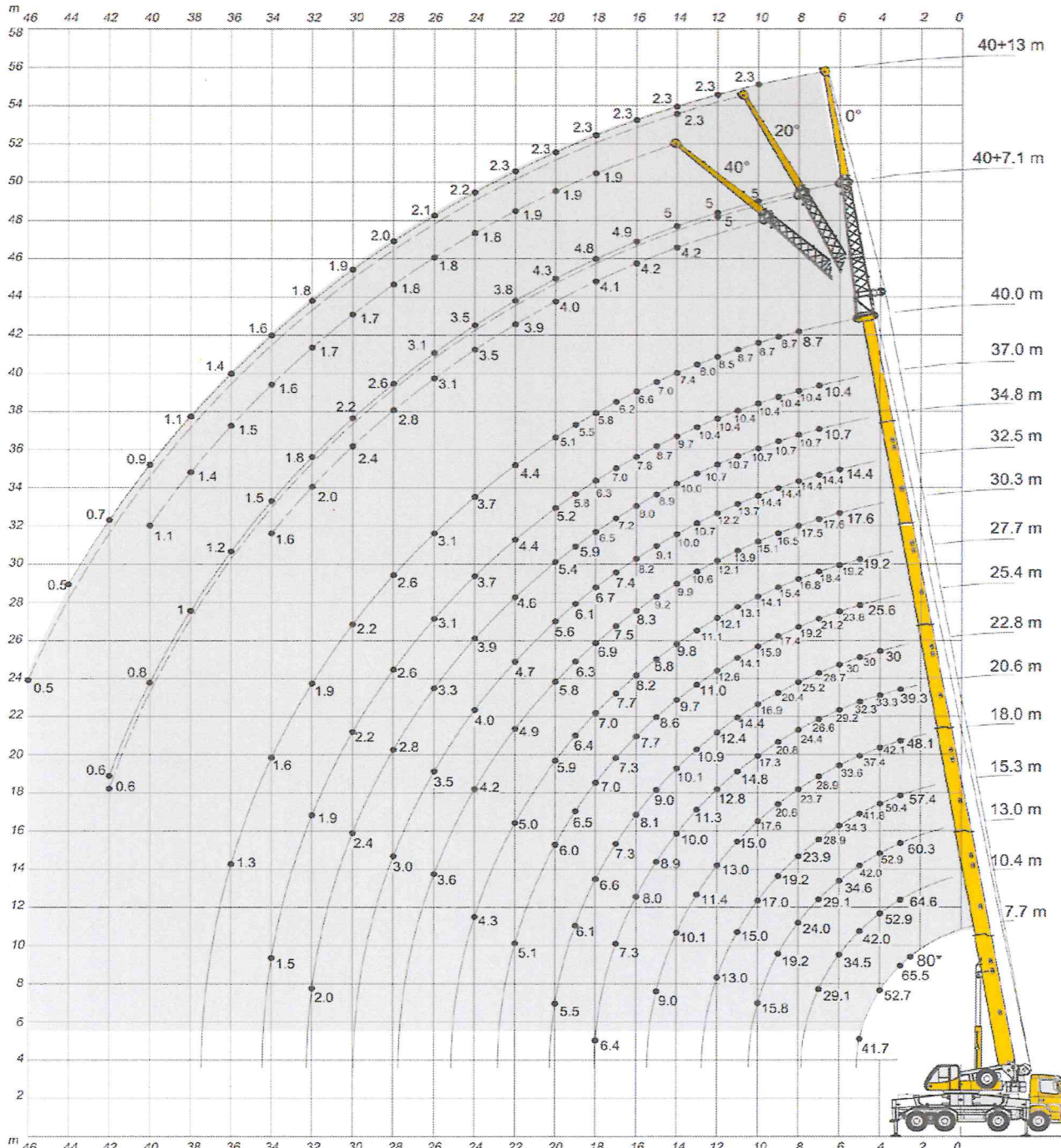
CES INFORMATIONS SONT SEULEMENT À TITRE INDICATIF. POUR LA MISE EN SERVICE DE LA MACHINE IL FAUT OBSERVER LE MODE D'EMPLOI.

DIE WIEDERGEgebenEN INFORMATIONEN NUR ZUR ANGABE. DIE INBETRIEBSETZUNG DER MASCHINE ERFOrdERT DIE BEACHTUNG DER GEBRAUCHSANWEISUNGEN UND DER MITGELIEFERTEN TRAGFÄHIGKEITSTABELLEN.

**Altezze di sollevamento / portate**  
**Maximum tip height / lifting capacities**  
**Hauteurs de levage / forces de levage**  
**Hubhöhen / Traglasten**



 7,7-40m |
  7,1x6,4m |
  270° |
  8 t |
  7.1-13m |
 DIN-ISO



\* 0° = sul posteriore - over rear - sur l'arrière - nach hinten

\*\* = stabilizzazione parziale - partial outrigger - base d'appuis réduit - teilstabilisation