

## GRT655/GRT655L

### Product guide

EN13000  
Metric 85 %



60 t/51 t



GRT655:  
10,6 m - 34,8 m

GRT655L:  
10,8 m - 43,0 m



7,92 m - 13,7 m



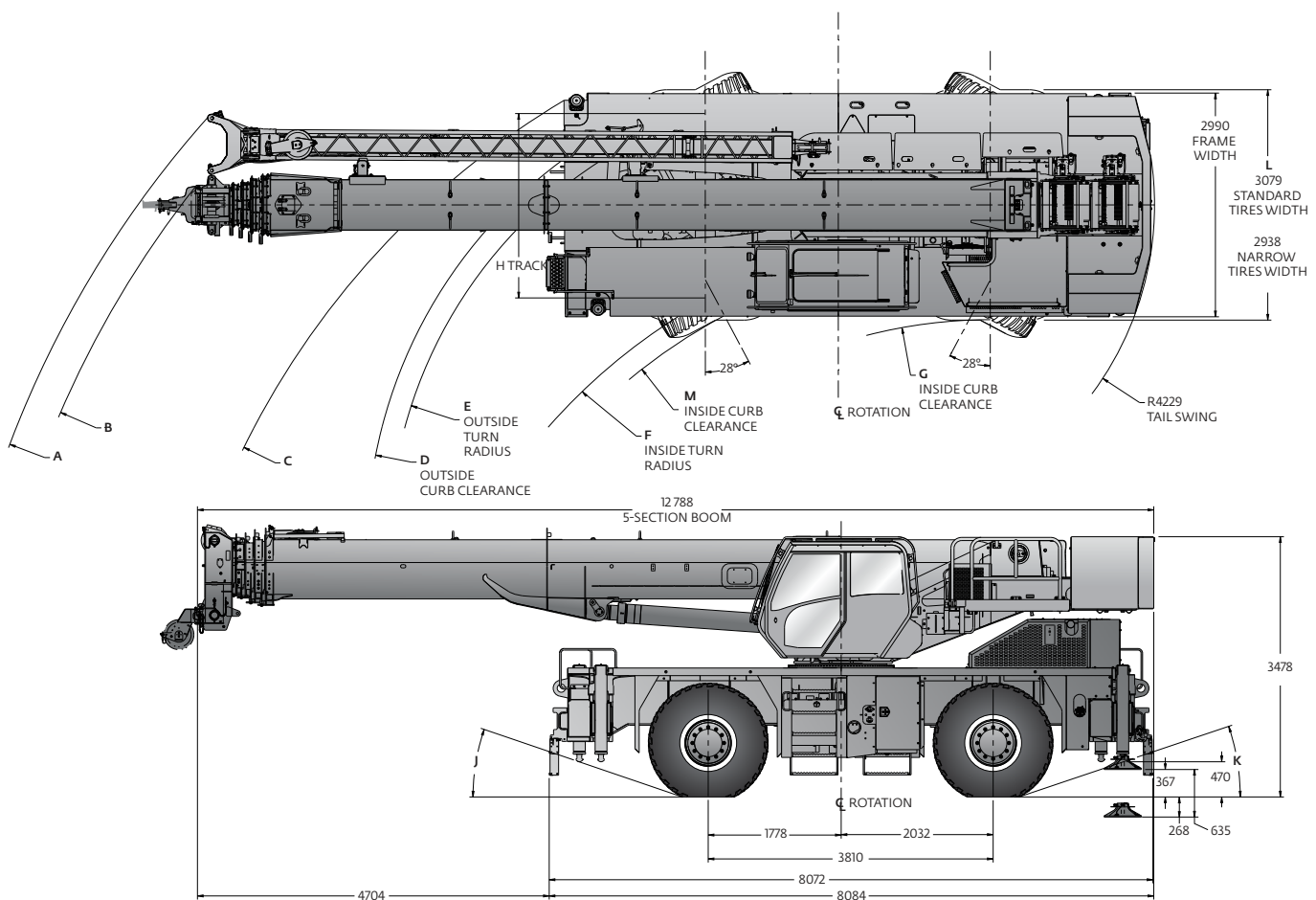
GRT655:  
51,8 m

GRT655L:  
59,7 m

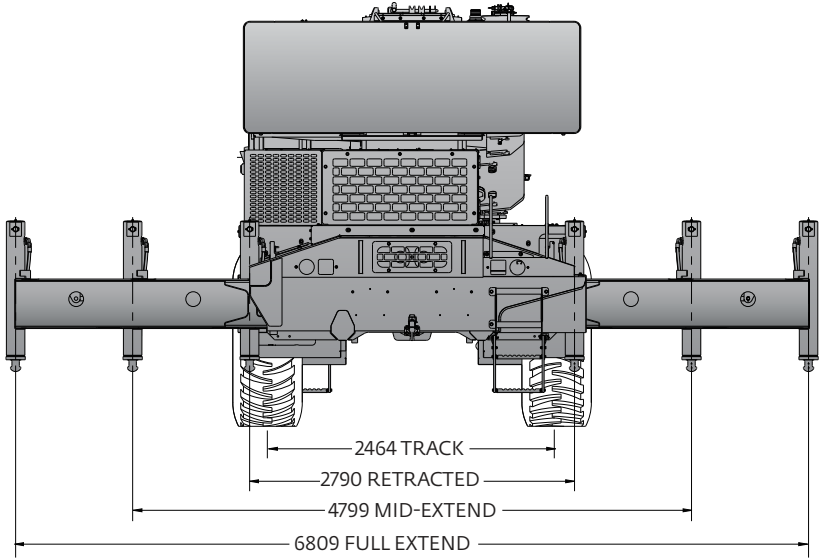
# GRT655L: Dimensions • Abmessungen • Encombremet Dimensiones • Dimensioni • Dimensões • Размеры

Standard tire size: 23,5 x 25,0												
Two-Wheel Steer	A	B	C	D	E	F	G	H	J	K	L	M
	14017 mm	13548 mm	11125 mm	10459 mm	10161 mm	7864 mm	6623 mm	2464 mm	25°	21°	3079 mm	7564 mm
Four-Wheel Steer	A	B	C	D	E	F	G	H	J	K	L	M
	10309 mm	9969 mm	7082 mm	6435 mm	6140 mm	3813 mm	3513 mm	2464 mm	25°	21°	3079 mm	3514 mm
Narrow tire size: 18,0 x 25,0												
Two-Wheel Steer	A	B	C	D	E	F	G	H	J	K	L	M
	14017 mm	13548 mm	11125 mm	10386 mm	10138 mm	7888 mm	6688 mm	2439 mm	19°	19°	2938 mm	7577 mm
Four-Wheel Steer	A	B	C	D	E	F	G	H	J	K	L	M
	10309 mm	9969 mm	7082 mm	6362 mm	6116 mm	3837 mm	3587 mm	2439 mm	19°	19°	2938 mm	3526 mm

Dimensions in mm unless otherwise specified. • Sofern nicht anders festgelegt, verstehen sich die Abmessungen in mm. • Les cotes sont en mm sauf indication contraire. • Dimensiones en mm salvo que se indique lo contrario. • Dimensioni in mm se non diversamente specificato. • Dimensões em mm salvo indicação em contrário. • Размеры приведены в миллиметрах, если не указано иное.



**GRT655/GRT655L: Dimensions • Abmessungen • Encombremet  
Dimensiones • Dimensioni • Dimensões • Размеры**



# Weight reductions • Gewichtsreduzierung durch Lastaufnahmemittel Reductions de charge • Reducciones de peso • Riduzioni di peso Reduções de peso • Снижение веса

<b>GRT655L: Weight reductions • Gewichtsreduzierung durch Lastaufnahmemittel • Reductions de charge • Reducciones de peso • Riduzioni di peso • Reduções de peso • Снижение веса</b>			
	Gross kg	Front kg	Rear kg
<p><b>Basic Machine:</b> including five-section 43,0 m main boom, main hoist with 180 m of wire rope, IPO, full pinned counterweight, air conditioner, full aluminum decking, and hoist access platform and Tier 4F engine</p> <p><b>Grundausführung:</b> inklusive dem fünfteiligen Ausleger mit 43,0 m, dem Haupthubwerk mit 180m Drahtseil, IPO, einem fest angebrachten Gegengewicht, Klimaanlage, Aluminiumabdeckung über die volle Länge, Zugangsplattform zur Winde und einem Tier 4F Motor</p> <p><b>Machine de base:</b> comprenant une flèche principale de 43 m à cinq sections, un treuil principal avec 180m de câble métallique, IPO, contrepoids entièrement broché, climatiseur, platelage complet en aluminium et plateforme d'accès au treuil et moteur Tier 4F</p> <p><b>Máquina básica:</b> incluyendo pluma principal de 43,0 m de cinco secciones, elevador principal con 180 m de cable de acero, IPO, contrapeso anclado completo, equipo de aire acondicionado, cubierta completa de aluminio, plataforma de acceso al elevador y motor nivel 4F.</p> <p><b>Macchina base:</b> comprensiva di braccio principale a 5 sezioni da 43,0 m, argano principale con 180 m di fune metallica, IPO, contrappeso fissato con perni, clima, ponte tutto in alluminio, piattaforma di accesso all'argano e motore Tier 4F</p> <p><b>Máquina básica:</b> incluindo a lança principal de 43,0 m, com cinco secções, guincho principal com 180 m de cabo, IPO, contrapeso totalmente fixo, aparelho de ar condicionado, plataforma totalmente em alumínio, plataforma de acesso ao guincho e motor Tier 4F</p> <p><b>Базовая комплектация:</b> пятисекционная главная стрела длиной 43,0 м, основная лебедка с канатом длиной 180 м, IPO, противовес на штифтах, кондиционер воздуха, полностью алюминиевый настил, платформа для доступа к лебедке, двигатель Tier 4F</p>	33058	15138	17921
<p><b>Add:</b> 51 t five-sheave hook block stowed in trough • <b>Zusätzlich:</b> 51 t Hakenblock mit 5 Rollen darin verstaut • <b>Ajouter:</b> bloc de crochet intégré de 51 t à cinq poulies stocké dans le coffre • <b>Sumar:</b> bloque de gancho de 5 poleas para 51 toneladas replegado. • <b>Aggiunta:</b> Bozzello a 5 pulegge da 51 t alloggiato in vano • <b>Acrescentar:</b> Bloco de guincho de 51 t com cinco roldanas, guardado na calha • <b>Дополнение:</b> Укладываемый в отсек крюковой блок 51 т с пятью шкивами</p>	425	439	-14
<p>crane weight • Krangewicht • poids de la grue • peso de grúa • peso gru • peso da grua • масса крана</p>	33483	15577	17906
<p><b>Add:</b> 6.0 t headache ball • <b>Zusätzlich:</b> 6,0 t Kugelhaken • <b>Ajouter:</b> boule de démolition de 6 t • <b>Sumar:</b> bola de demolición de 6,0 t • <b>Aggiunta:</b> Gancio a palla da 6,0 t • <b>Acrescentar:</b> Bola de demolição de 6 t • <b>Дополнение:</b> Шар-утяжелитель 6,0 т</p>	105	168	-64
<p>crane weight • Krangewicht • poids de la grue • peso de grúa • peso gru • peso da grua • масса крана</p>	33588	15745	17843
<p><b>Add:</b> 7,92 m-13,7 m telescopic swingaway + carrier brackets + aux. nose • <b>Zusätzlich:</b> teleskopische Klappspitze 7,92 m-13,7 m + Trägerkonsolen + Hilfskopf • <b>Ajouter:</b> extension télescopique de 7,92 m à 13,7 m + consoles de support + tête auxiliaire. • <b>Sumar:</b> extensión plegable de 7,92 m-13,7 m + soportes de baca + brazo auxiliar • <b>Aggiunta:</b> Falcone telescopico 7,92 m-13,7 m + staffe di supporto + testa braccio ausiliaria • <b>Acrescentar:</b> Lança auxiliar telescópica de 7,92 - 13,7 m + suportes de transporte + bocal aux. • <b>Дополнение:</b> Телескопический удлинитель 7,92–13,7 м + кронштейны для крепления + вспомогательный оголовок</p>	978	1810	-832
<p>crane weight • Krangewicht • poids de la grue • peso de grúa • peso gru • peso da grua • масса крана</p>	34566	17554	17011
<p><b>Add:</b> Auxiliary Hoist + 180 m of wire rope ILO IPO • <b>Zusätzlich:</b> Hilfswinde + 180 m Drahtseil und ILO IPO • <b>Ajouter:</b> treuil auxiliaire + 180 m de câble métallique et ILO IPO • <b>Sumar:</b> Elevador auxiliar + 180 m de cable de acero ILO IPO • <b>Aggiunta:</b> Argano ausiliario + 180 m di fune e ILO IPO • <b>Acrescentar:</b> Guincho auxiliar + 180 m de cabo e ILO IPO • <b>Дополнение:</b> Вспомогательная лебедка + 180 м каната ILO IPO</p>	25	-4	29
<p>crane weight • Krangewicht • poids de la grue • peso de grúa • peso gru • peso da grua • масса крана</p>	34590	17550	17040

**Data • Daten • Caractéristiques • Datos  
Dati • Características • Данные**



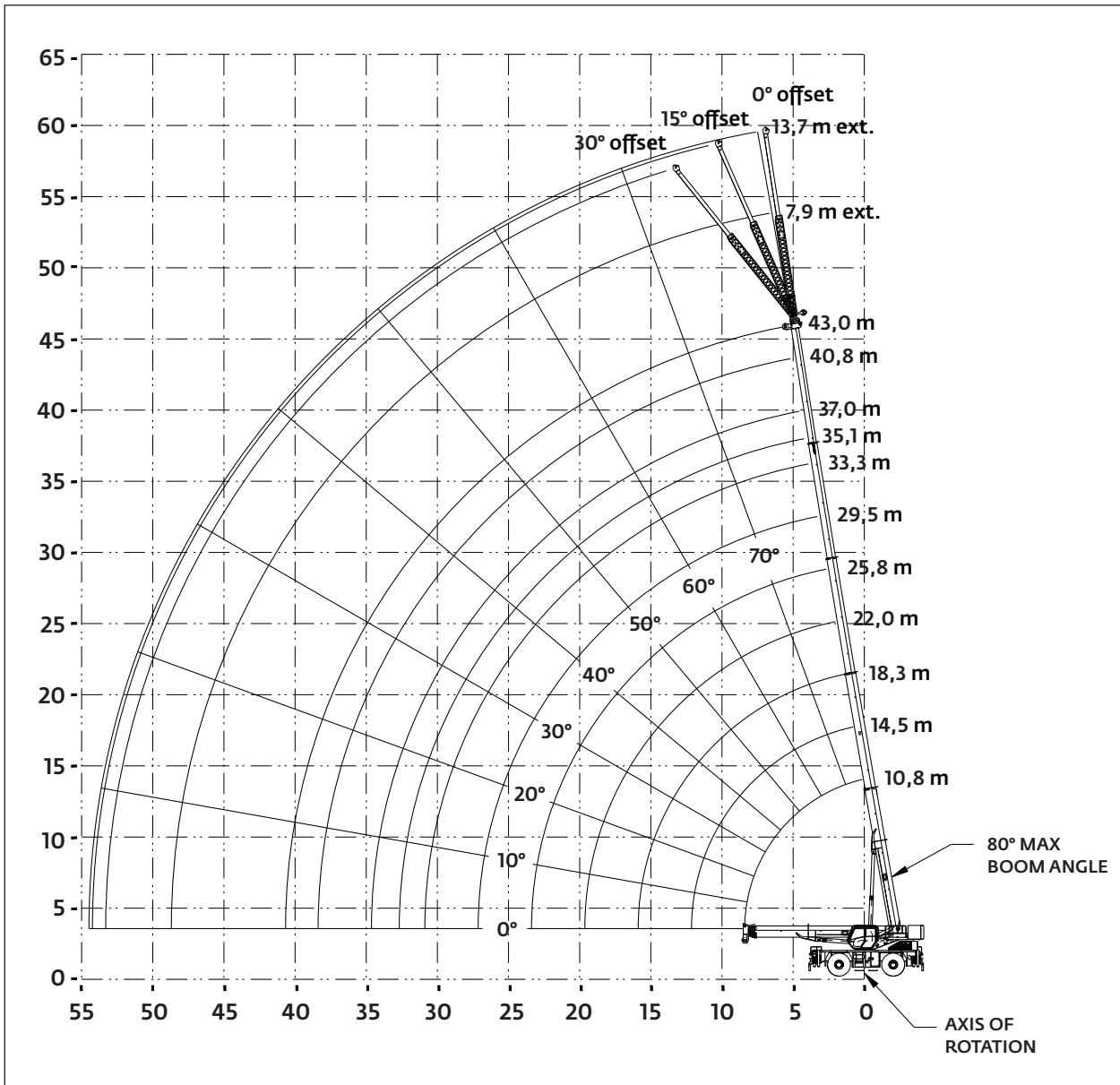
<b>Lifting capacity</b> Traglast Force de levage Capacidad de elevación Capacità di sollevamento Capacidade de elevação Грузоподъемность	<b>Sheaves</b> Rollen Poulies Poleas Carrucole Roldanas Шкивы	<b>Parts of line</b> Stränge Brins Ramales de cable Numero di funi Partes de cabo Кратность запасовки	<b>Total weight</b> Gesamtgewicht Poids total Peso total Peso totale Peso total Суммарный вес
51 t	5	2 to 10	425 kg
35 t	3	2 to 7	380 kg
17 t	1	2	261 kg
6 t	H/B (swivel)	1	105 kg



	<b>Infinitely variable</b> Stufenlos verstellbar Progressivement variable Infinitamente variable Infinitamente variabile Infinitamente variável Плавно-изменяемый	<b>Rope</b> Seil Câble Cable Fune Cabo Канат	<b>Permissible line pull max.</b> Max. Seilzug Effort maxi au brin Tiro admisible del cable Tiro diretto massimo Esforço max. admissível no cabo Максимально допустимое натяжение каната	<b>Nominal cable length</b> Seillänge (Nennwert) Longueur nominale des cables Longitud nominal del cable Lunghezza nominale cavo Comprimento nominal de cabo Номинальная длина каната
	0 - 148 m/min single line/bei einfachem Strang brin simple/ramal simple/ tiro a fune singola/cabo simples/Однократная запасовка	16 mm (35x7WSC)	5552 kg	180 m
	0 - 148 m/min single line/bei einfachem Strang brin simple/ramal simple/ tiro a fune singola/cabo simples/Однократная запасовка	16 mm (35x7WSC)	5552 kg	180 m
	0 - 1,7			
	20° 70° <b>GRT655:</b> approx. 22 s/ ca. 22 s/env. 22 s/ aproximadamente 22 s/circa 22 s/cerca de 22 s/примерно 22 с <b>GRT655L:</b> approx. 24 s/ ca. 24 s/env. 24 s/ aproximadamente 24 s/circa 24 s/cerca de 24 s/примерно 24 с			
	10,6 to 34,8 m 10,8 to 43 m <b>GRT655/GRT655L:</b> approx. 61 s out 120 s in/ etwa 61 s aus und 120 s ein/environ. 61 s en sortie et 120 s en entrée/ Aprox. 61s salida 120s entrada/circa. 61 s fuori 120 s dentro/aprox. saída 61 s e entrada 120 s/ выдвижение припл. 61 с, убирание 120 с			

# GRT655L: Load charts • Traglasten • Capacités de levage • Capacidades Caracità • Diagramas de carga • Таблицы грузоподъемности

Working range • Arbeitsbereich • Rayon d'opération • Rango operativo  
 Area di lavoro • Raio de operação • Грузовысотные характеристики



# GRT655L: Load charts • Traglasten • Capacités de levage • Capacidades Capacità • Diagramas de carga • Таблицы грузоподъемности

Telescopic boom • Teleskopausleger • Flèche principale • Pluma telescópica • Braccio telescopico  
Lança telescópica • Телескопическая стрела



10,8 m - 43 m



100 %



360°



5580 kg



EN13000

m	10,8	14,5	18,3	22,0	25,8	29,5	33,3	37,0	40,8	43,0	m
2,0	60,000**										2,5
2,5	50,000										2,5
3,0	40,550	20,025	19,300	18,725							3,0
3,5	36,900	20,025	19,300	18,725							3,5
4,0	34,100	20,025	19,300	18,725							4,0
4,5	31,500	20,025	19,300	18,525	16,050						4,5
5,0	29,325	20,025	19,300	17,825	15,450	*12,800					5,0
6,0	25,125	20,025	19,125	16,325	14,375	11,825	*10,100				6,0
7,0	20,900	19,750	17,900	15,200	13,450	10,750	9,475	*8,095			7,0
8,0	12,825	18,550	16,850	14,225	12,600	10,000	8,875	7,865	*6,400		8,0
9,0		15,950	15,675	13,375	11,825	9,345	8,325	7,435	6,400	5,320	9,0
10,0		12,925	13,350	12,650	11,150	8,740	7,825	7,030	6,290	5,320	10,0
12,0		5,390	9,490	9,705	9,440	7,680	6,960	6,305	5,400	5,075	12,0
14,0			7,010	7,275	7,380	6,850	6,195	5,690	4,905	4,635	14,0
16,0				5,575	5,740	5,810	5,050	4,795	4,475	4,240	16,0
18,0				4,335	4,535	4,620	4,415	4,195	4,005	3,890	18,0
20,0					3,600	3,710	3,725	3,685	3,520	3,430	20,0
22,0					2,860	2,960	3,015	3,075	3,075	3,025	22,0
24,0						2,355	2,425	2,500	2,525	2,535	24,0
26,0						1,860	1,940	2,020	2,055	2,065	26,0
28,0							1,530	1,610	1,655	1,670	28,0
30,0							1,175	1,260	1,310	1,330	30,0
32,0								0,960	1,010	1,030	32,0
34,0									0,750	0,770	34,0
36,0									0,520	0,540	36,0



85 %

m	10,8	14,5	18,3	22,0	25,8	29,5	33,3	37,0	40,8	43,0	m
2,0	60,000**										2,5
2,5	51,000										2,5
3,0	40,550	20,025	19,300	18,725							3,0
3,5	36,900	20,025	19,300	18,725							3,5
4,0	34,100	20,025	19,300	18,725							4,0
4,5	31,500	20,025	19,300	18,725	18,000						4,5
5,0	29,325	20,025	19,300	18,650	17,550	*15,750					5,0
6,0	25,125	20,025	19,300	18,475	16,525	14,375	*12,675				6,0
7,0	20,900	19,750	19,250	17,250	15,350	13,250	11,850	*9,660			7,0
8,0	12,825	18,550	18,300	16,025	14,250	12,225	11,000	9,540	*8,210		8,0
9,0		15,975	16,175	15,000	13,300	11,300	10,225	9,230	8,210	7,120	9,0
10,0		14,025	14,275	13,950	12,500	10,525	9,450	8,725	7,890	7,120	10,0
12,0		5,390	10,375	10,575	10,800	9,230	7,900	7,575	7,105	6,725	12,0
14,0			7,765	8,005	8,200	7,950	6,660	6,410	6,210	6,040	14,0
16,0				6,230	6,425	6,485	5,690	5,465	5,285	5,205	16,0
18,0				4,915	5,135	5,195	4,890	4,685	4,540	4,465	18,0
20,0					4,130	4,215	4,235	4,055	3,910	3,840	20,0
22,0					3,335	3,435	3,500	3,515	3,385	3,315	22,0
24,0						2,795	2,865	2,945	2,930	2,865	24,0
26,0						2,265	2,350	2,430	2,460	2,475	26,0
28,0							1,915	2,000	2,040	2,060	28,0
30,0							1,540	1,625	1,680	1,700	30,0
32,0								1,305	1,350	1,395	32,0
34,0									1,075	1,120	34,0
36,0									0,830	0,875	36,0

\* This capacity is based on maximum boom angle. • Diese Kapazität beruht auf einem maximalen Auslegerwinkel. • Capacité basée sur un angle de flèche maximal. • Esta capacidad se basa en un ángulo de pluma máximo. • Questa capacità si basa sull'angolo max del braccio. • Esta capacidade baseia-se no ângulo máximo da lança. • Грузоподъемность при максимальном угле стрелы.

\*\* With special equipment. • Mit Sonderausrüstung. • Avec équipement spécial. • Con equipamiento especial. • Con equipaggiamento speciale. • Com equipamento especial. • Со специальным оборудованием.

# GRT655L: Load charts • Traglasten • Capacités de levage • Capacidades Caracità • Diagramas de carga • Таблицы грузоподъемности

Telescopic boom • Teleskopausleger • Flèche principale • Pluma telescópica • Braccio telescopico  
Lança telescópica • Телескопическая стрела



10,8 m - 43 m



50 %  
4,8 m



360°



5580 kg



EN13000

m	10,8	14,5	18,3	22,0	25,8	29,5	33,3	37,0	40,8	43,0	m
3,0	39,800	20,025	19,300	18,725							3,0
3,5	36,900	20,025	19,300	18,725							3,5
4,0	34,100	20,025	19,300	18,725							4,0
4,5	30,375	20,025	19,300	18,525	16,050						4,5
5,0	25,525	20,025	19,300	17,825	15,450	12,800					5,0
6,0	19,050	18,025	16,975	16,050	14,375	11,825	10,100				6,0
7,0	14,525	14,325	13,650	13,025	12,400	10,750	9,475	8,095			7,0
8,0	11,150	11,675	11,275	10,825	10,350	9,955	8,875	7,865	6,400		8,0
9,0		9,390	9,475	9,150	8,795	8,485	8,135	7,435	6,400	5,320	9,0
10,0		7,620	8,040	7,835	7,555	7,310	7,025	6,815	6,290	5,320	10,0
12,0		5,180	5,655	5,860	5,710	5,555	5,350	5,220	5,065	4,970	12,0
14,0			4,050	4,305	4,385	4,305	4,150	4,065	3,955	3,885	14,0
16,0				3,160	3,330	3,350	3,250	3,190	3,110	3,055	16,0
18,0				2,310	2,495	2,600	2,535	2,510	2,445	2,405	18,0
20,0					1,845	1,940	1,950	1,950	1,910	1,875	20,0
22,0					1,315	1,410	1,475	1,485	1,465	1,445	22,0
24,0						0,975	1,050	1,095	1,080	1,070	24,0
26,0						0,615	0,700	0,770	0,760	0,750	26,0



85 %

m	10,8	14,5	18,3	22,0	25,8	29,5	33,3	37,0	40,8	43,0	m
3,0	39,800	20,025	19,300	18,725							3,0
3,5	36,900	20,025	19,300	18,725							3,5
4,0	34,100	20,025	19,300	18,725							4,0
4,5	31,500	20,025	19,300	18,525	18,000						4,5
5,0	27,750	20,025	19,300	18,650	17,550	15,750					5,0
6,0	19,700	19,625	18,750	17,950	16,525	14,375	12,675				6,0
7,0	14,525	15,200	14,900	14,375	13,850	13,250	11,850	9,660			7,0
8,0	11,150	11,775	12,150	11,825	11,450	11,100	10,725	9,540	8,210		8,0
9,0		9,390	9,845	9,935	9,650	9,400	9,095	8,875	8,210	7,120	9,0
10,0		7,620	8,100	8,280	8,240	8,050	7,805	7,640	7,450	7,120	10,0
12,0		5,180	5,655	5,920	6,000	6,065	5,900	5,800	5,675	5,595	12,0
14,0			4,050	4,305	4,455	4,530	4,545	4,495	4,410	4,355	14,0
16,0				3,160	3,330	3,440	3,450	3,510	3,465	3,425	16,0
18,0				2,310	2,495	2,600	2,635	2,695	2,725	2,700	18,0
20,0					1,845	1,940	1,990	2,065	2,095	2,105	20,0
22,0					1,315	1,410	1,475	1,550	1,590	1,605	22,0
24,0						0,975	1,050	1,130	1,175	1,195	24,0
26,0						0,615	0,700	0,775	0,820	0,845	26,0
28,0									0,525	0,545	28,0



# GRT655L: Load charts • Traglasten • Capacités de levage • Capacidades Caracità • Diagramas de carga • Таблицы грузоподъемности

Telescopic boom • Teleskopausleger • Flèche principale • Pluma telescópica • Braccio telescopico  
Lança telescópica • Телескопическая стрела



10,8 m - 43 m



0 %  
2,8 m



360°



5580 kg



EN13000

m	10,8	14,5	18,3	22,0	25,8	29,5	33,3	37,0	40,8	43,0	m
3,0	24,650	20,025	19,300	18,475							3,0
3,5	19,975	18,425	16,950	15,675							3,5
4,0	16,575	15,575	14,475	13,500							4,0
4,5	14,025	13,375	12,550	11,800	11,075						4,5
5,0	12,050	11,575	11,000	10,400	9,810	9,285					5,0
6,0	9,140	8,945	8,650	8,260	7,845	7,480	7,085				6,0
7,0	7,055	7,070	6,915	6,700	6,395	6,130	5,825	5,600			7,0
8,0	5,335	5,675	5,610	5,485	5,285	5,085	4,845	4,675	4,490		8,0
9,0		4,565	4,590	4,520	4,400	4,250	4,055	3,925	3,775	3,685	9,0
10,0		3,560	3,770	3,745	3,655	3,570	3,405	3,305	3,185	3,110	10,0
12,0		2,115	2,545	2,565	2,530	2,495	2,405	2,345	2,265	2,210	12,0
14,0			1,565	1,715	1,710	1,705	1,640	1,630	1,575	1,535	14,0
16,0				1,075	1,085	1,100	1,055	1,060	1,035	1,015	16,0
18,0				0,525	0,600	0,625	0,590	0,610	0,595	0,585	18,0










85 %

m	10,8	14,5	18,3	22,0	25,8	29,5	33,3	37,0	40,8	43,0	m
3,0	28,025	20,025	19,300	18,725							3,0
3,5	22,325	20,025	19,300	18,450							3,5
4,0	18,325	17,500	16,550	15,675							4,0
4,5	15,375	14,900	14,200	13,525	12,875						4,5
5,0	13,100	12,850	12,350	11,825	11,300	10,825					5,0
6,0	9,485	9,810	9,610	9,290	8,935	8,620	8,265				6,0
7,0	7,055	7,640	7,645	7,470	7,225	7,005	6,740	6,545			7,0
8,0	5,335	5,870	6,170	6,110	5,935	5,780	5,570	5,435	5,270		8,0
9,0		4,565	4,975	5,025	4,930	4,815	4,650	4,550	4,425	4,345	9,0
10,0		3,560	3,985	4,155	4,110	4,040	3,905	3,830	3,730	3,665	10,0
12,0		2,115	2,545	2,790	2,855	2,850	2,765	2,730	2,665	2,620	12,0
14,0			1,565	1,795	1,940	1,970	1,925	1,930	1,885	1,855	14,0
16,0				1,075	1,235	1,310	1,280	1,305	1,290	1,270	16,0
18,0				0,525	0,700	0,795	0,775	0,805	0,805	0,800	18,0

# GRT655L: Load charts • Traglasten • Capacités de levage • Capacidades Caracità • Diagramas de carga • Таблицы грузоподъемности

Manual bifold swingaway • Manuelle Doppelklappspitze • Extension à double repliage latéral manuel  
 Extensión abatible, manual, articulada en dos secciones • Falcone ripieghevole meccanico  
 xtensão dupla articulada, manual • складной удлинитель

 43 m
  7,9 - 13,7 m
  100 %
  360°
  5580 kg



EN13000

m	7,9 m length			13,7 m length			m
	0°	15°	30°	0°	15°	30°	
12,0	2,865	*2,770		*1,980			12,0
14,0	2,865	2,705	2,360	1,925			14,0
16,0	2,805	2,600	2,315	1,870	1,605		16,0
18,0	2,615	2,415	2,230	1,815	1,560	*1,360	18,0
20,0	2,395	2,250	2,085	1,760	1,515	1,320	20,0
22,0	2,190	2,095	1,955	1,705	1,470	1,280	22,0
24,0	2,000	1,920	1,835	1,650	1,435	1,245	24,0
26,0	1,805	1,760	1,730	1,600	1,385	1,215	26,0
28,0	1,445	1,605	1,600	1,510	1,340	1,185	28,0
30,0	1,135	1,280	1,390	1,410	1,285	1,160	30,0
32,0	0,855	0,980	1,080	1,170	1,215	1,140	32,0
34,0	0,600	0,715	0,795	0,920	1,120	1,100	34,0
36,0			0,545	0,695	0,875	1,000	36,0
38,0				0,500	0,660	0,770	38,0
40,0						0,565	40,0



85 %

m	7,9 m length			13,7 m length			m
	0°	15°	30°	0°	15°	30°	
12,0	3,905	*3,810		*2,725			12,0
14,0	3,890	3,500	*2,795	2,725			14,0
16,0	3,700	3,190	2,695	2,670	2,060		16,0
18,0	3,355	2,920	2,610	2,500	1,965	*1,595	18,0
20,0	3,050	2,690	2,450	2,330	1,880	1,550	20,0
22,0	2,790	2,485	2,285	2,195	1,805	1,505	22,0
24,0	2,565	2,310	2,140	2,065	1,740	1,460	24,0
26,0	2,365	2,145	2,005	1,945	1,675	1,425	26,0
28,0	2,115	2,005	1,885	1,800	1,605	1,385	28,0
30,0	1,695	1,865	1,780	1,680	1,510	1,355	30,0
32,0	1,330	1,475	1,590	1,565	1,420	1,325	32,0
34,0	1,015	1,135	1,235	1,450	1,335	1,260	34,0
36,0	0,740	0,835	0,930	1,130	1,260	1,200	36,0
38,0		0,570	0,660	0,845	1,055	1,060	38,0
40,0				0,590	0,805	0,840	40,0
42,0					0,580	0,650	42,0

\* This capacity is based on maximum boom angle. • Diese Kapazität beruht auf einem maximalen Auslegerwinkel. • Capacité basée sur un angle de flèche maximal. • Esta capacidad se basa en un ángulo de pluma máximo. • Questa capacità si basa sull'angolo max del braccio. • Esta capacidade baseia-se no ângulo máximo da lança. • Грузоподъемность при максимальном угле стрелы.

# GRT655L: Load charts • Traglasten • Capacités de levage • Capacidades Capacità • Diagramas de carga • Таблицы грузоподъемности

Telescopic boom • Teleskopausleger • Flèche principale • Pluma telescópica • Braccio telescopico  
Lança telescópica • Телескопическая стрела



10,8 m - 43 m



Stationary



360°



5580 kg



EN13000

m	10,8	14,5	18,3	22,0	m
3,0	18,275	16,050			3,0
3,5	16,100	15,150	9,975		3,5
4,0	13,775	13,025	9,635		4,0
4,5	11,275	11,225	9,140	9,070	4,5
5,0	9,415	9,755	8,830	8,700	5,0
6,0	6,760	7,280	7,265	6,930	6,0
7,0	4,980	5,530	5,735	5,600	7,0
8,0	3,695	4,250	4,440	4,500	8,0
9,0		3,265	3,470	3,555	9,0
10,0		2,490	2,720	2,815	10,0
12,0		1,340	1,630	1,745	12,0
14,0			0,875	1,015	14,0
16,0					16,0



85 %

m	10,8	14,5	18,3	22,0	m
3,0	18,275	16,050			3,0
3,5	16,100	15,150	9,975		3,5
4,0	13,875	13,550	9,635		4,0
4,5	11,575	11,800	9,140	9,070	4,5
5,0	9,700	10,050	8,830	9,065	5,0
6,0	7,060	7,550	7,760	7,730	6,0
7,0	5,285	5,805	5,995	5,970	7,0
8,0	4,005	4,530	4,705	4,730	8,0
9,0		3,550	3,740	3,810	9,0
10,0		2,780	2,990	3,070	10,0
12,0		1,635	1,905	2,010	12,0
14,0			1,150	1,280	14,0
16,0				0,745	16,0

# GRT655L: Load charts • Traglasten • Capacités de levage • Capacidades Caracità • Diagramas de carga • Таблицы грузоподъемности

Telescopic boom • Teleskopausleger • Flèche principale • Pluma telescópica • Braccio telescopico  
Lança telescópica • Телескопическая стрела



10,8 m - 43 m



Pick and carry  
up to 1,6 kph



360°



5580 kg



EN13000

m	10,8	14,5	18,3	22,0	m
3,0	13,825	13,825			3,0
3,5	12,450	11,625	9,750		3,5
4,0	11,200	10,325	9,430		4,0
4,5	10,025	9,505	8,955	8,800	4,5
5,0	9,370	9,145	8,645	8,545	5,0
6,0	8,165	8,580	8,080	7,950	6,0
7,0	6,945	7,480	7,490	7,350	7,0
8,0	5,815	6,485	6,745	6,755	8,0
9,0		5,475	5,765	6,160	9,0
10,0		4,560	4,820	5,095	10,0
12,0		3,015	3,290	3,520	12,0
14,0			2,260	2,460	14,0
16,0				1,700	16,0
18,0				1,125	18,0



85 %

m	10,8	14,5	18,3	22,0	m
3,0	13,825	13,825			3,0
3,5	12,450	11,625	9,750		3,5
4,0	11,200	10,325	9,430		4,0
4,5	10,025	9,505	8,955	8,800	4,5
5,0	9,370	9,145	8,645	8,545	5,0
6,0	8,165	8,580	8,080	7,950	6,0
7,0	6,945	7,480	7,490	7,350	7,0
8,0	5,815	6,485	6,745	6,755	8,0
9,0		5,475	5,765	6,160	9,0
10,0		4,685	4,980	5,425	10,0
12,0		3,380	3,680	4,045	12,0
14,0			2,715	2,985	14,0
16,0				2,160	16,0
18,0				1,500	18,0

## Load charts • Traglasten • Capacités de levage • Capacidades • Capacità • Diagramas de carga • Таблицы грузоподъемности

Weight reductions • Gewichtsreduzierung durch Lastaufnahmemittel • Reductions de charge Reducciones de peso • Riduzioni di peso • Reduções de peso • Снижение веса	
Auxiliary boom nose • Hilfsrollenkopf • Tête de flèche auxiliaire • Cabeza auxiliar de pluma • Falconcino ausiliario in testa al braccio • Cabeça de lança auxiliar • Дополнительный оголовок стрелы	45 kg
7,9 m - 13,7 m Telescopic boom extension • 7,9 m - 13,7 m an Teleskop-Gitterspitzen • Extension télescopique de la flèche de 7,9 m à 13,7 m • 7,9 m - 13,7 m Extensión pluma telescópica • Prolunga braccio telescopico da 7,9 m - 13,7 m • Extensão telescópica da lança de 7,9 m - 13,7 m • Телескопический удлинитель 7,9 м -13,7 м	
7,9 m erected • Klappspitze vorgebaut • Déplié • Montado • Montato • Montado • смонтированный	1315 kg
13,7 m erected • Klappspitze vorgebaut • Déplié • Montado • Montato • Montado • смонтированный	1678 kg

Note: All load handling devices and boom attachments are considered part of the load and suitable allowances must be made for their combined weights.

Hinweis: Alle Lastaufnahmemittel und jede Zusatzausrüstung des Hauptauslegers werden als Teil der Traglast betrachtet und ihre kombinierten Gewichte müssen beim Feststellen der Nettolast entsprechend berücksichtigt (abgezogen) werden.

Remarque: Les équipements complémentaires et accessoires de levage sont considérés comme faisant partie de la charge; les réductions de charges de leurs poids combinés doivent être effectuées.

Nota: Todos los aparos de elevación e implementos de pluma son considerados parte de la carga y deben ser tenidos en cuenta para calcular los pesos a elevar.

Nota: Tutti gli accessori di sollevamento e le opzioni montate sul braccio sono considerati parte del carico e devono essere effettuate adeguate deduzioni per i loro pesi combinati.

Nota: Todos os acessórios de elevação e opcionais de lança contribuem para a carga a elevar pelo que devem ser tidos em conta nos cálculos dos pesos a elevar.

Примечание: Все грузозахватные устройства и дополнительные приспособления стрелы считаются частью веса поднимаемого груза, поэтому, данное обстоятельство необходимо учитывать при расчете параметров подъема.